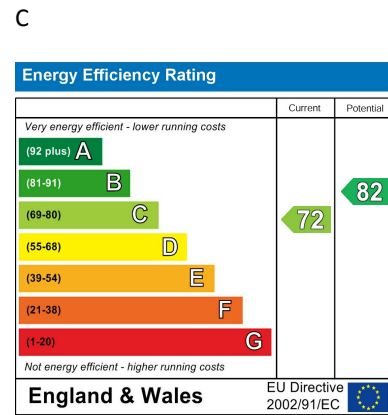


Directions

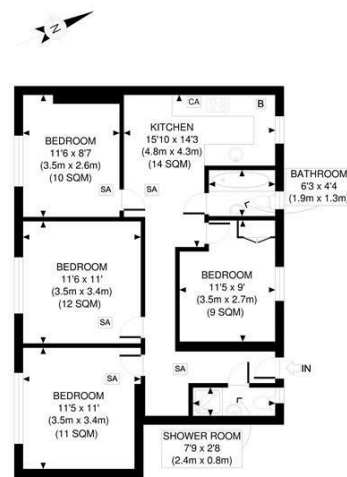
Viewings

Viewings by arrangement only. Call 02087436444 to make an appointment.

EPC Rating



Eleanor House, W6



APPROX. GROSS INTERNAL FLOOR AREA 771 SQ FT / 72 SQM
Whilst every attempt has been made to ensure the accuracy of the floor plan contained here, measurements of doors, windows and rooms are approximate and no responsibility is taken for any error, omission, or mis-statement. These plans are for representation purposes only as defined by RICS code of measuring practice and should be used as such by any prospective purchaser. Specially no guarantee is given on the total square footage of the property if quoted on this plan. Any figure given is for initial guidance only and should not be relied on as a basis of valuation.



14 Eleanor House, Queen Caroline Street, Hammersmith, W6 9RE

£4,000 PCM

14 Eleanor House, Hammersmith W6 9RE

IDEAL FOR SHARERS / STUDENTS

A well presented four double bedroom flat located moments from Hammersmith Broadway and The River Thames.

This extremely well located property comprises of four generous double bedrooms, an open plan kitchen/ reception room which includes a modern kitchen and all white goods, two modern bathrooms, a separate WC and a private balcony. The property comes fully furnished and also benefits from having wooden floors throughout and internet access.

It is situated in the ever popular Queen Caroline Street and is only moments from the Thames Path, Hammersmith Broadway and King Street making it one of the most accessible locations in Hammersmith. It is less than five minutes walk to The District, Piccadilly, Circle, and Hammersmith and City underground lines.

This property would be an ideal let for students or professional sharers alike and is a must see.



Council Tax Band: D

